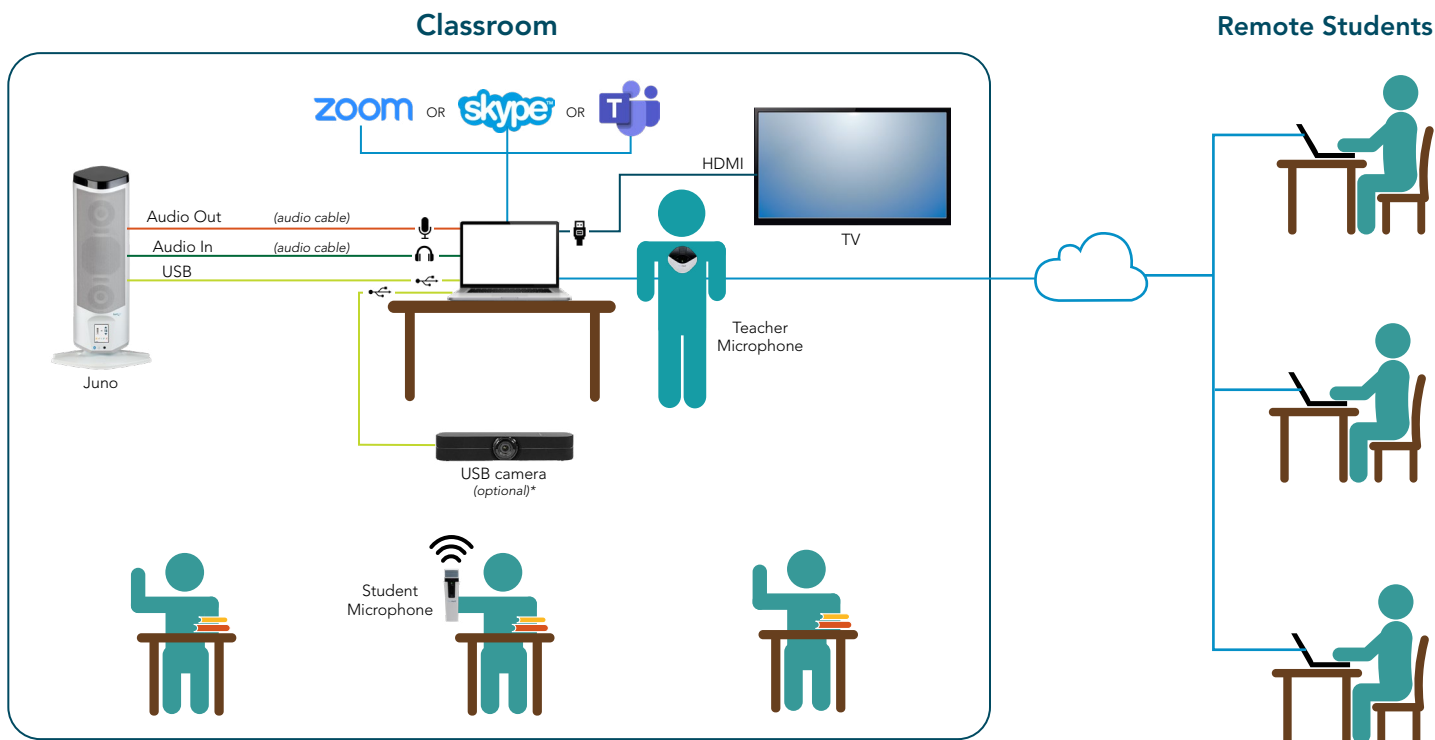


Solution

Juno seamlessly integrates with popular video conferencing solutions to bring the classroom to remote students and remote students into the classroom.



How it works

All students hear the teacher and multi-media equally

- The Juno is connected to the teacher's computer audio input and output.
- The teacher wears the pendant microphone. When the teacher speaks or plays a video from the computer, their voice and audio are amplified in the classroom and heard by the remote students.

All students can participate equally

- When remote students are unmuted by the teacher, their voices are amplified in the classroom.
- When classroom students use the student microphone, their voices are amplified in the classroom and heard by remote students.

All students can see the teacher or other media equally

Using "Screen Share", teachers can share content from their interactive panel, live video from a USB camera, document camera or computer video.

All students can stay caught up

- Using remote conferencing recording functions, lessons can be recorded, shared and archived so students can access lessons for review at their convenience.

What you need

- FrontRow Juno System with Bluetooth
- FrontRow Teacher Edition Software
- FrontRow Student Microphone and charger
- Remote conferencing software, such as Zoom, Microsoft Teams or Skype*
- USB Camera (optional)*

Getting Started

1. Install Juno according to your classroom layout. Juno may be placed on a table or shelf or wall mounted.
2. Connect Juno audio inputs and outputs to the computer audio inputs and outputs and the USB connection using the supplied cables.
3. Download and Install Teacher Edition from the FrontRow website. Teacher Edition is currently being offered free-of-charge.
4. Download and install remote conferencing software.
5. Connect USB camera to the computer.

The [Juno Quick Start Guide](#), [User Guide](#) and [Installation Guide](#) can be found in our Guides and Resources section at <https://www.gofrontrow.com/en/guides-resources>

Hints and Tips for Success

There are many audio settings between all the various devices. Juno audio settings can be accessed through Teacher Edition or directly on the tower itself. To start, set the audio to the following:

Device	Setting
Computer Audio	80%
Juno Tower	
Speaker Volume	15
Teacher/Student Mic	5
Audio Device	15
Audio Out (dial)	6

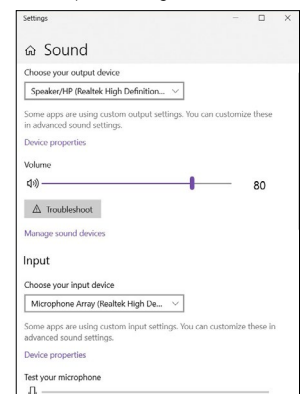
Adjusting Audio

Generally, the only audio you will need to adjust will be the Juno tower volume, which controls the overall speaker volume. However, it is OK to experiment with the Teacher/Student Mic settings and the Audio Device settings to fine tune the balance of voice and video or other audio.

PC Computer Settings

- If your computer has a single 3.5mm "headset" jack you will need to use an adapter to split the mic input from the speaker input. If your computer does not have a 3.5mm "headset" jack, you will need to use a USB to 3.5mm audio splitter.
- Open your computer sound settings to ensure the correct device is selected. Play a video or other file to check if the audio comes from the Juno tower.

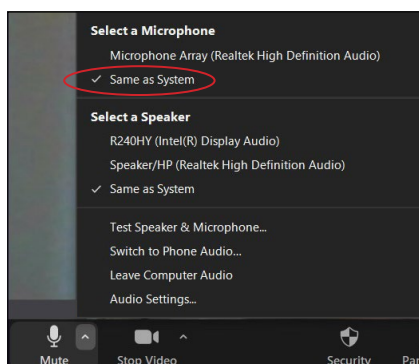
PC Computer Setting



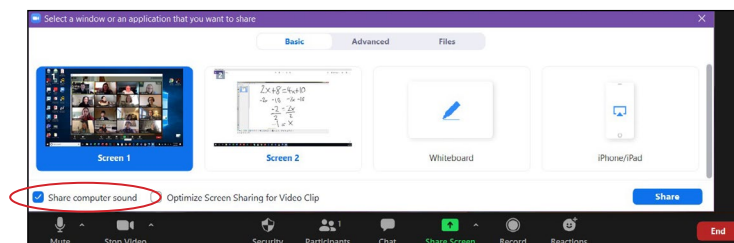
Zoom Settings

- When a meeting is started, select "Same as System" for the microphone and speakers.
- To share a video, share your screen or the video window and select "Share Computer Sound".

Zoom Audio Setting



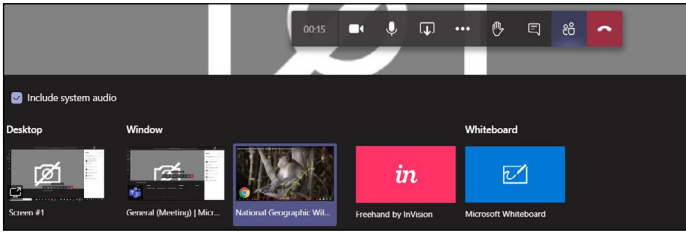
Zoom Audio Share



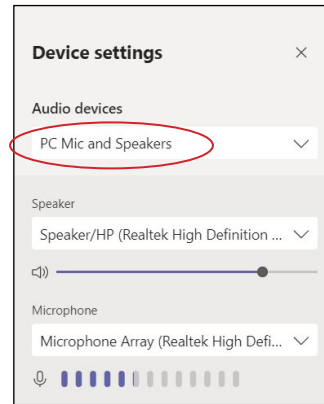
Microsoft Teams

- When a meeting is started, set the audio devices to “PC Mic and Speakers”.
- To share a video, share the screen and select “Share Computer Sound”.

Teams share



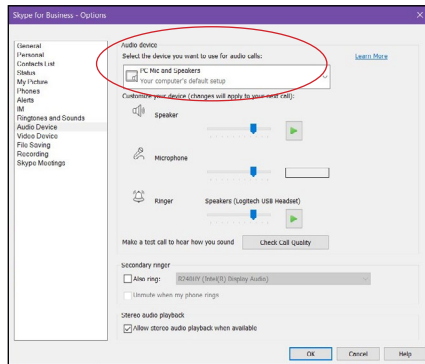
Teams Audio



Skype

- Click the “Options” icon, select “Audio Device” and select “PC Mic and Speakers”.
- Video sharing is not currently supported on Skype.

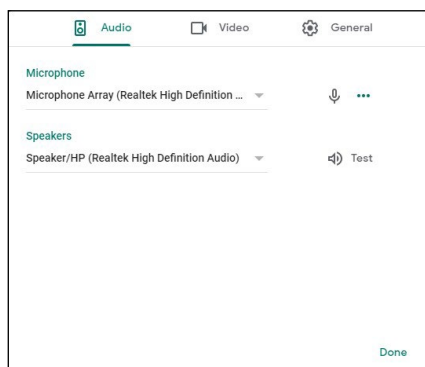
Skype audio setting



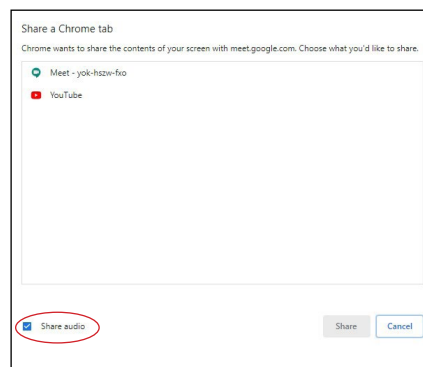
Google Meet

- Click the “Options” icon, under “Audio” select your computer’s default microphone and speakers.
- To share a video, select the tab, screen or window and click “Share audio”.

Google Meet audio setting



Google Meet share



USB Camera

Selecting the proper camera depends on your classroom layout, lighting, budget other factors. FrontRow recommends teachers experiment with several cameras to find the best fit. Once connected, many computers will automatically default to the USB camera as the microphone input. It is important to check your computer settings to ensure you are using the computer microphone input.